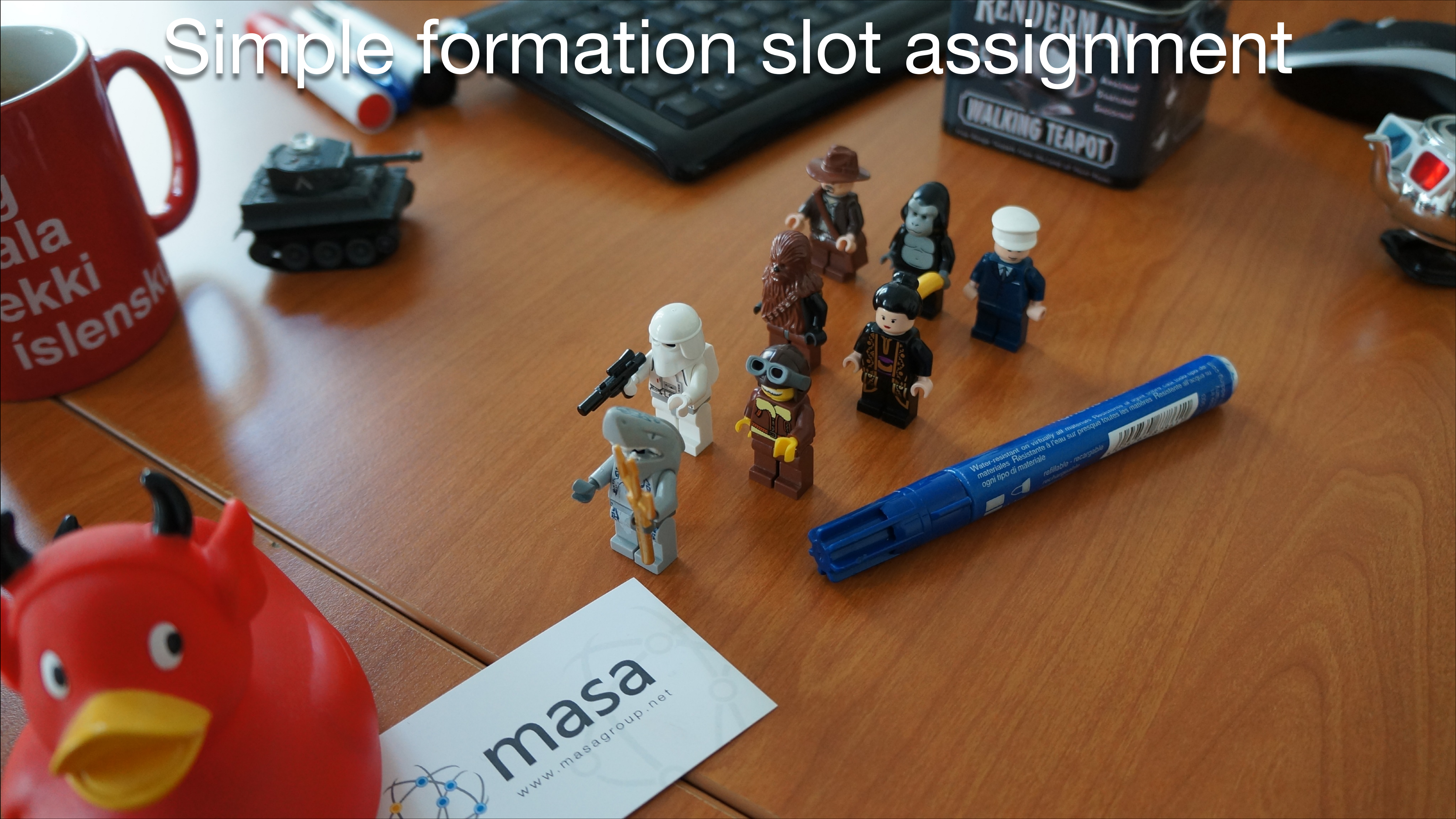


# Simple formation slot assignment



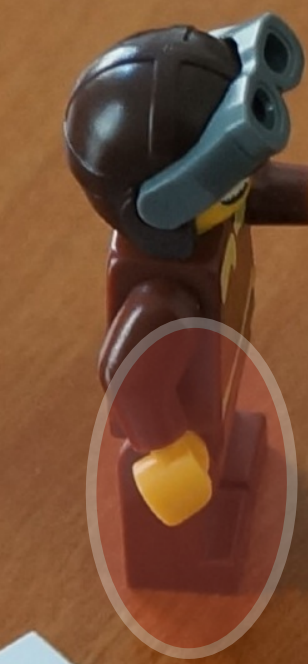
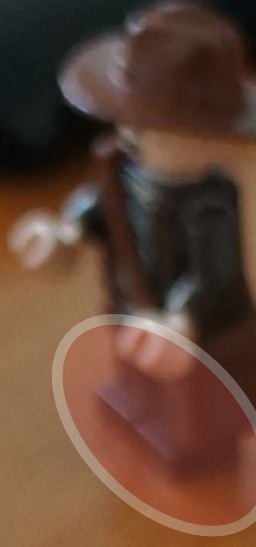
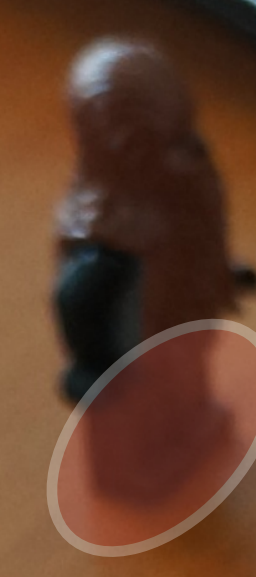
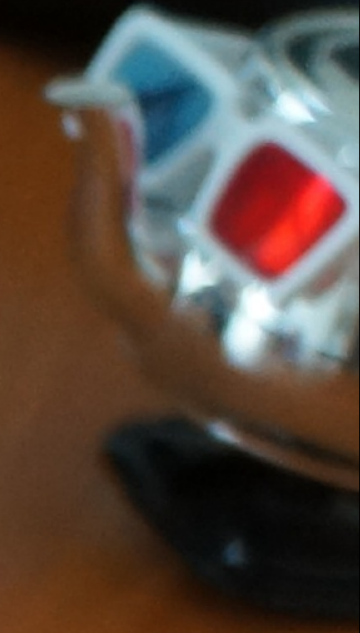
# Simple formation slot assignment

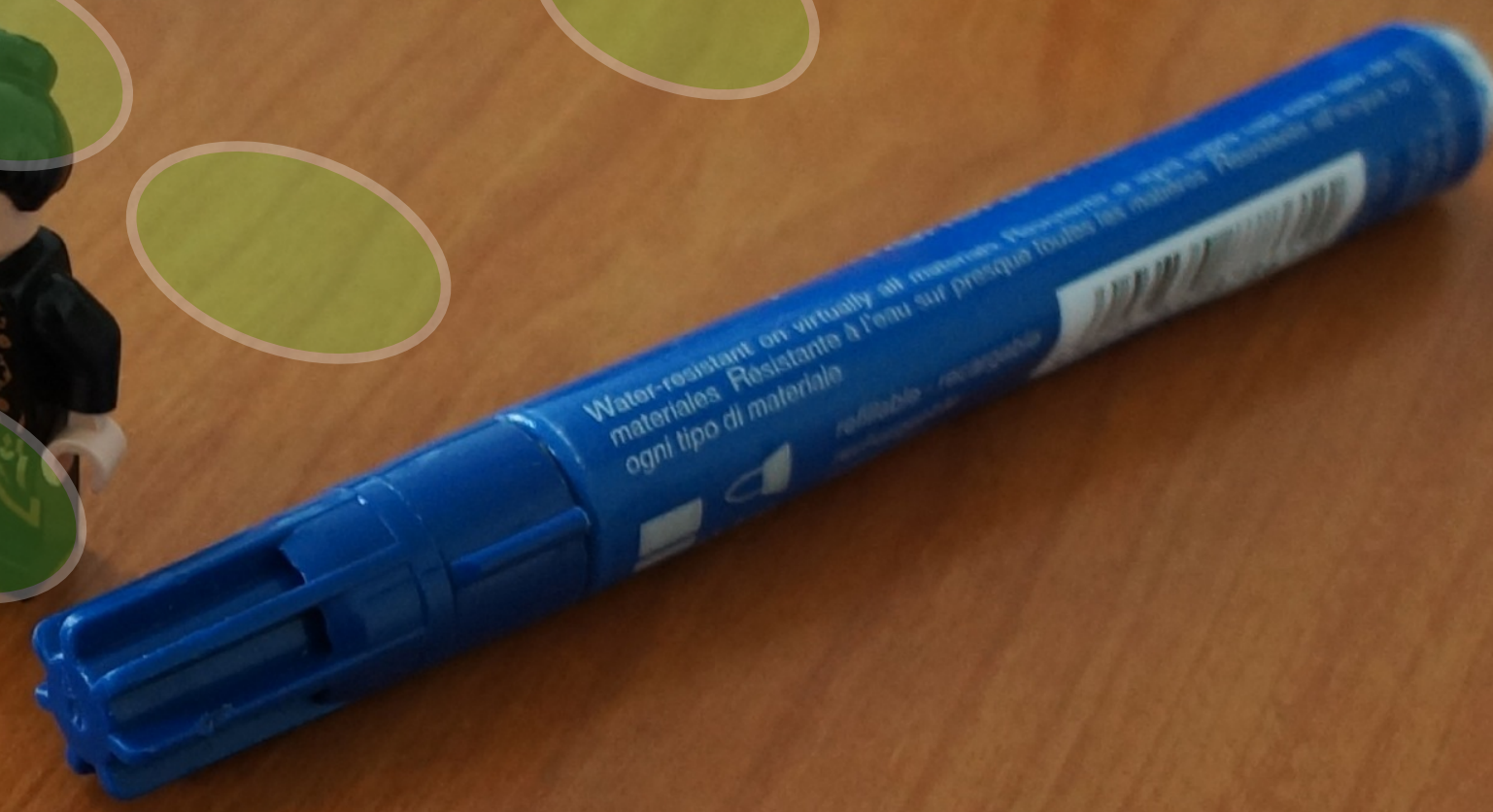
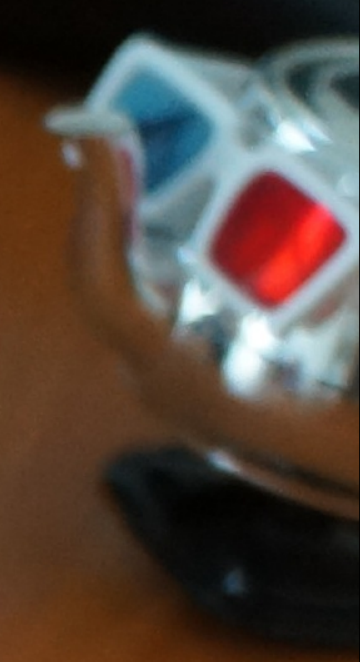
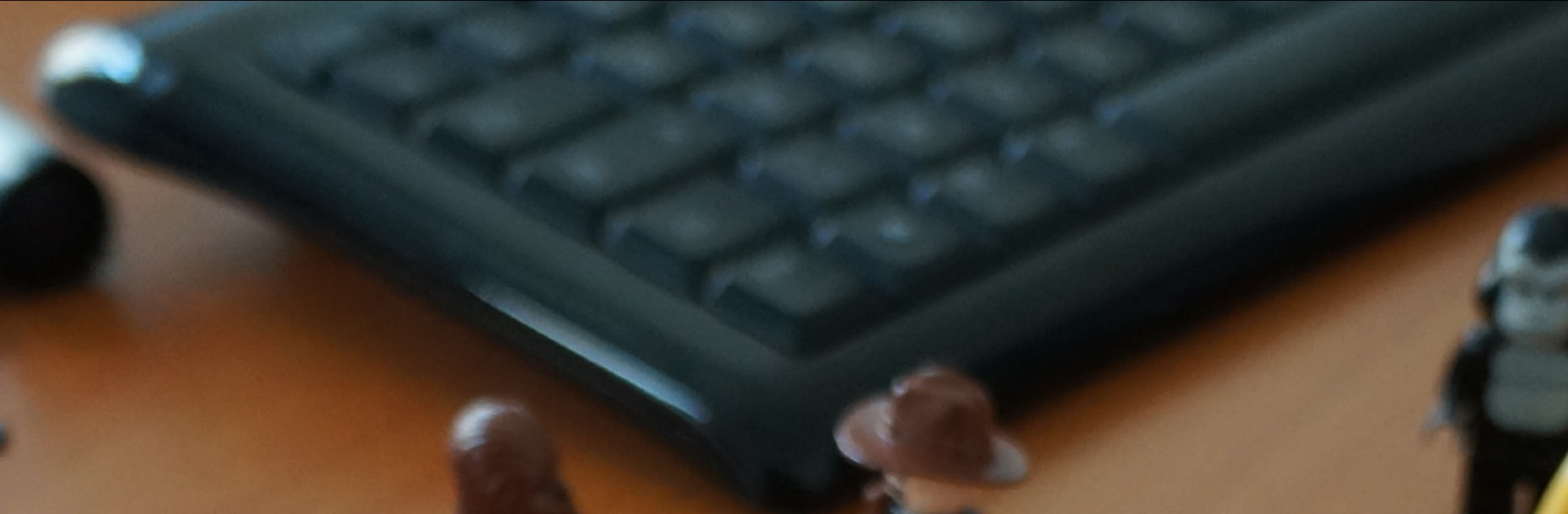


ala  
ekki  
islenski

KENDERMAN  
WALKING TEAPOT

masa  
www.masagroup.net







g  
ala  
ekki  
islenski

RENDERMAN  
3D  
WALKING TEAPOT

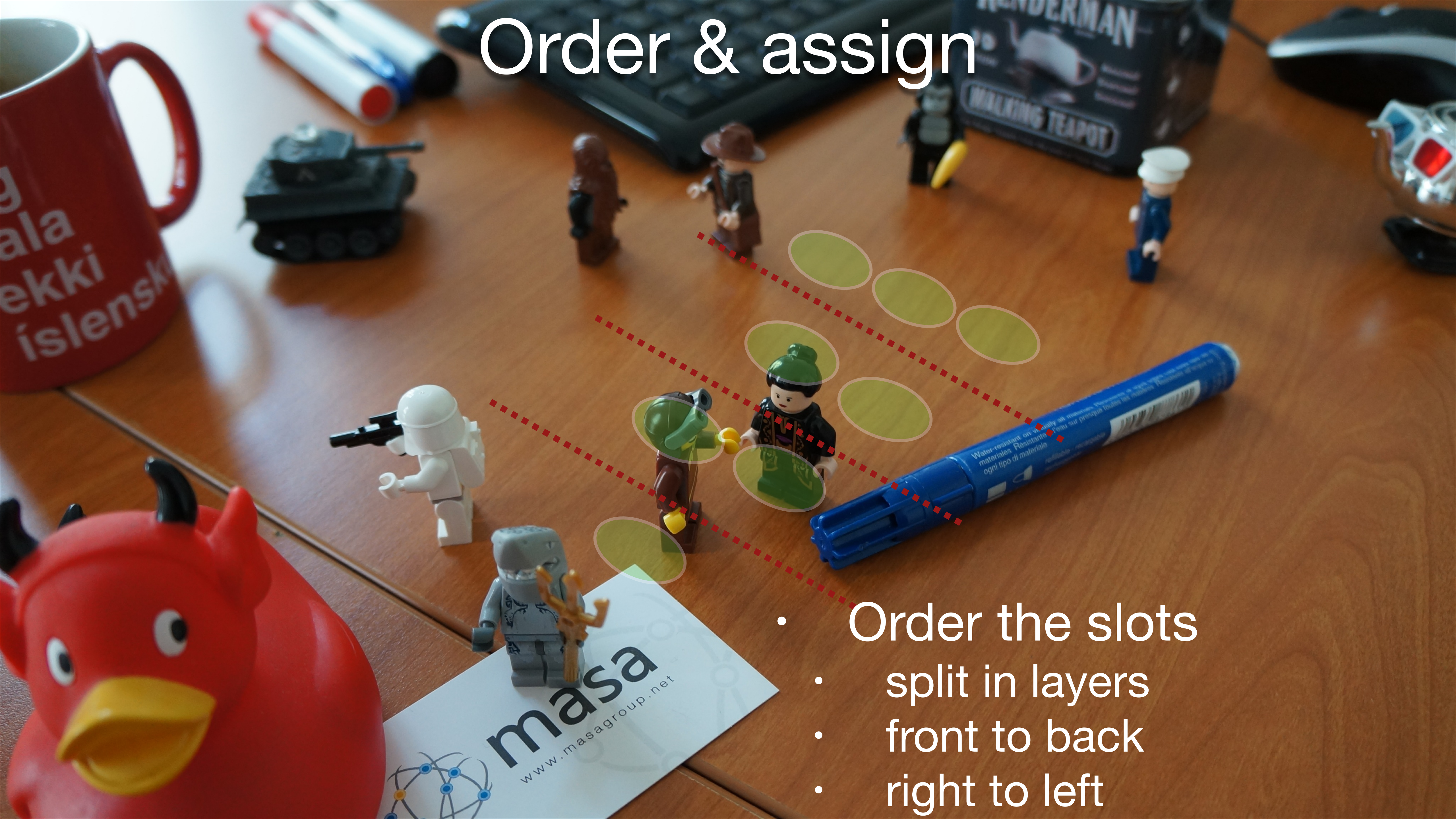
masa  
www.masagroup.net

- Greedy won't work
- Optimal is NP-Hard

# Order & assign

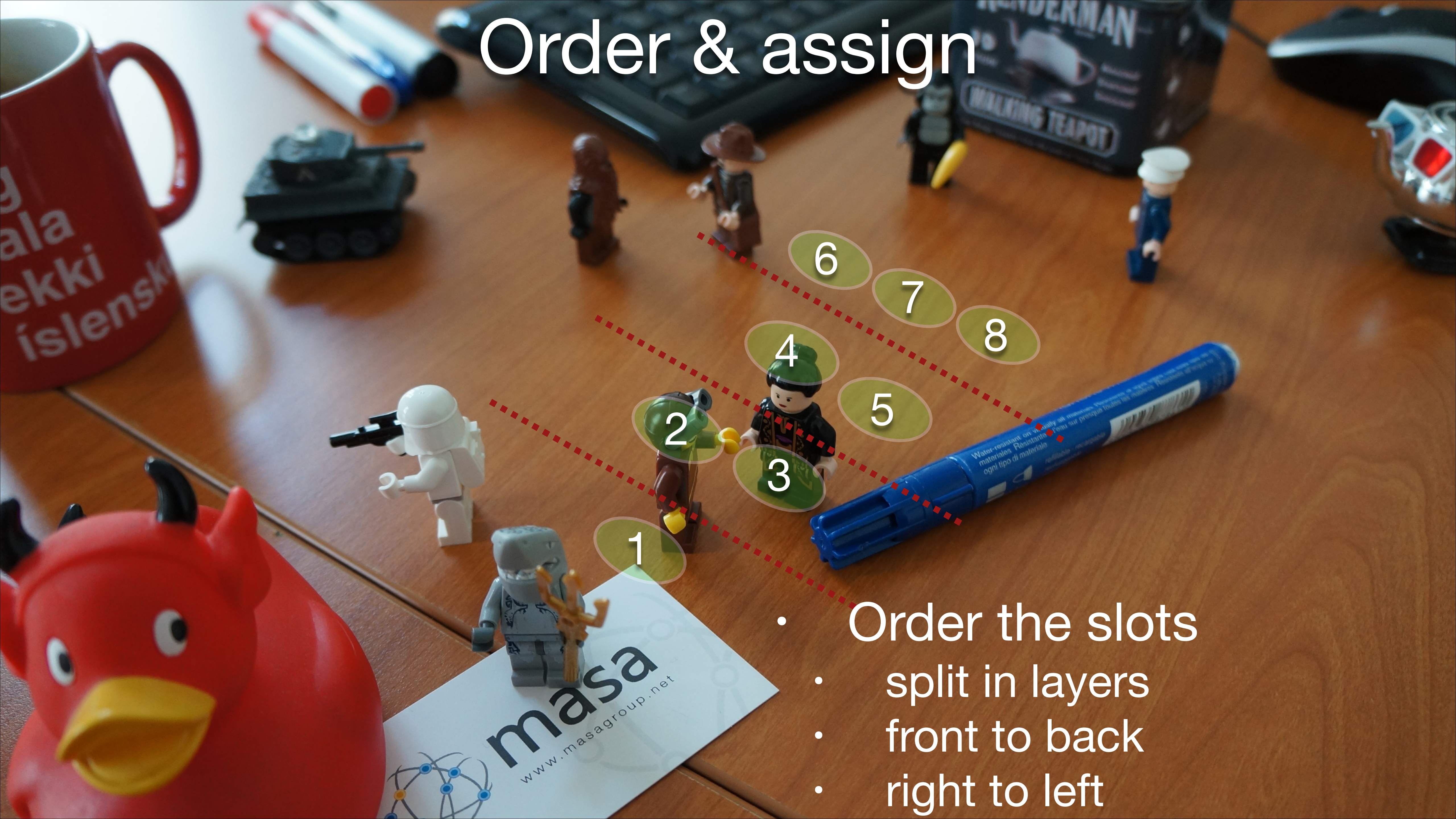
- Order the slots
  - split in layers
  - front to back
  - right to left

# Order & assign



- Order the slots
- split in layers
- front to back
- right to left

# Order & assign



- Order the slots
  - split in layers
  - front to back
  - right to left

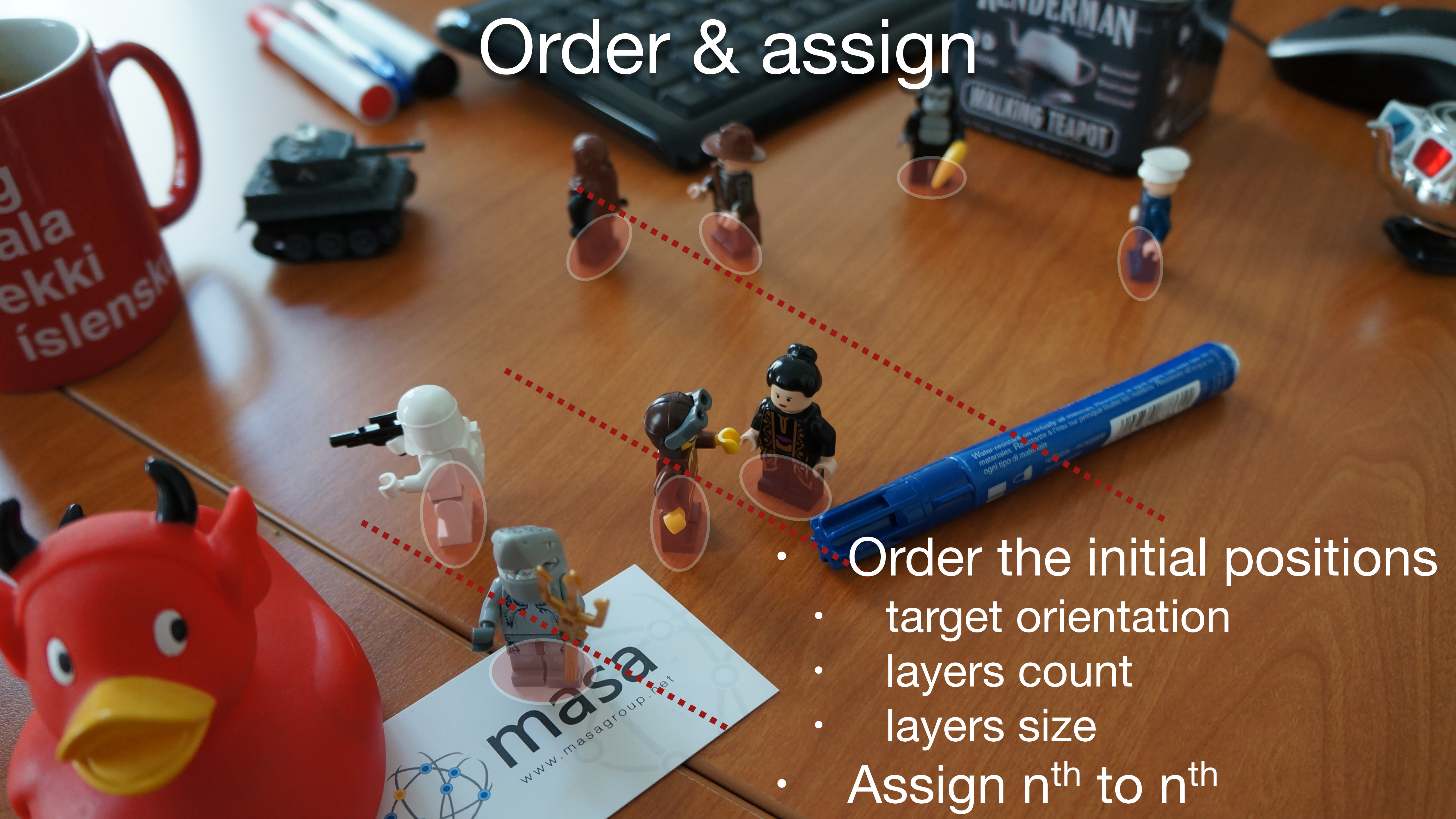


# Order & assign



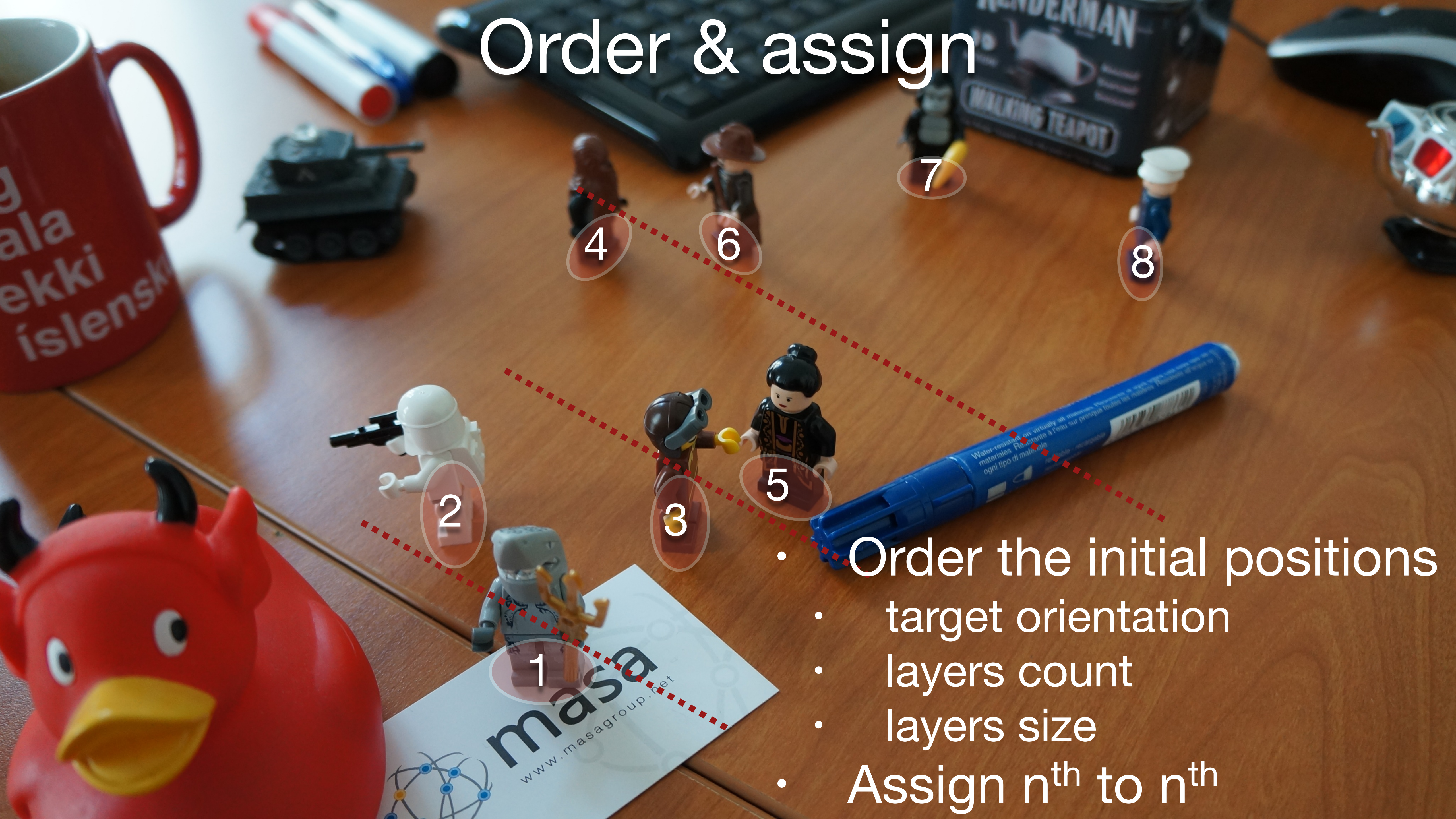
- Order the initial positions
  - target orientation
  - layers count
  - layers size
- Assign  $n^{\text{th}}$  to  $n^{\text{th}}$

# Order & assign



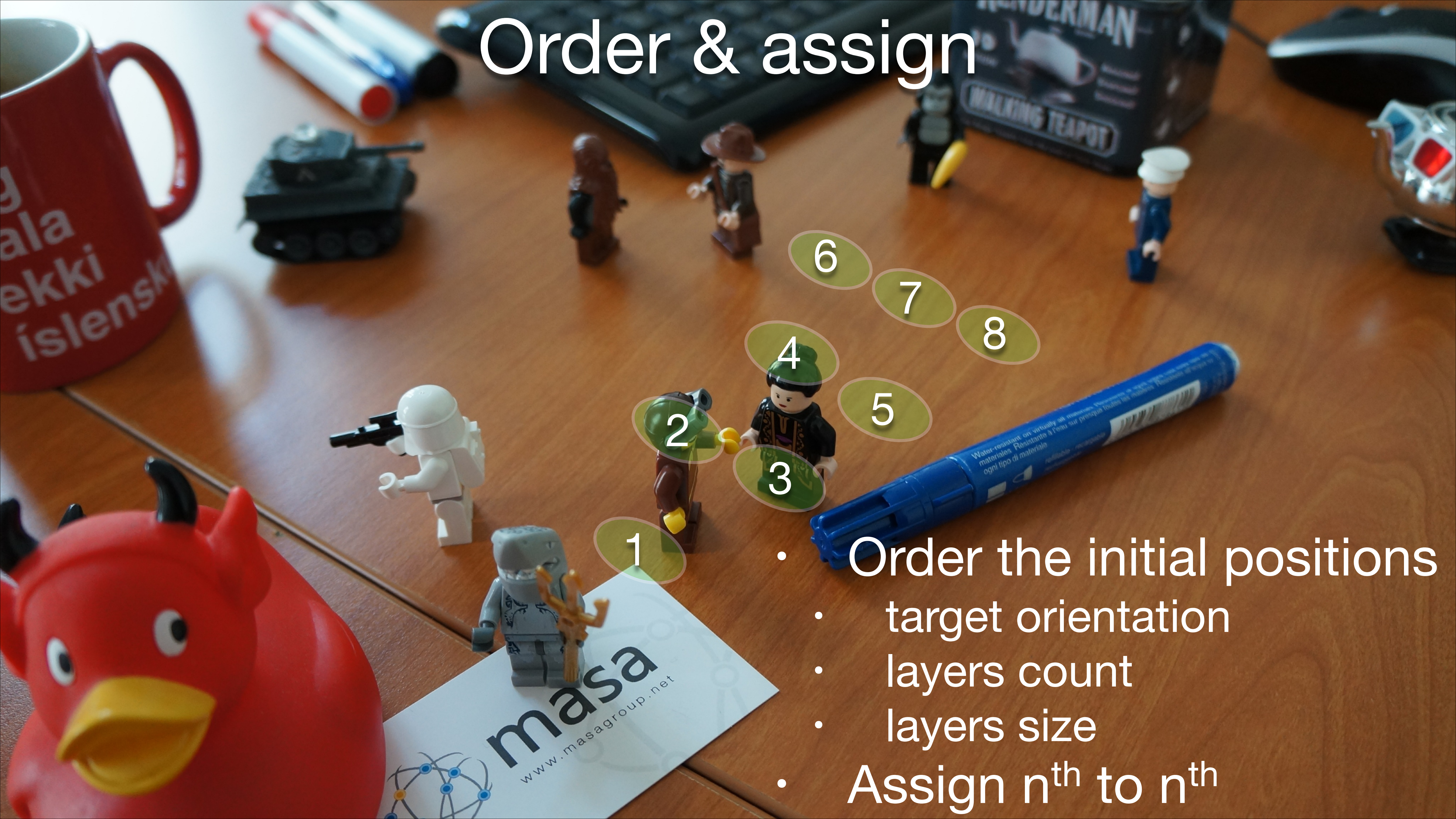
- Order the initial positions
  - target orientation
  - layers count
  - layers size
- Assign  $n^{\text{th}}$  to  $n^{\text{th}}$

# Order & assign



- Order the initial positions
- target orientation
- layers count
- layers size
- Assign  $n^{\text{th}}$  to  $n^{\text{th}}$

# Order & assign



- Order the initial positions
  - target orientation
  - layers count
  - layers size
- Assign  $n^{\text{th}}$  to  $n^{\text{th}}$

# Everything is awesome!



ala  
ekki  
islenski

KENDERMAN  
WALKING TEAPOT

masa  
www.masagroup.net

Clodéric Mars  
[cloderic.mars@masagroup.net](mailto:cloderic.mars@masagroup.net)  
[@clodericmars](https://twitter.com/clodericmars)